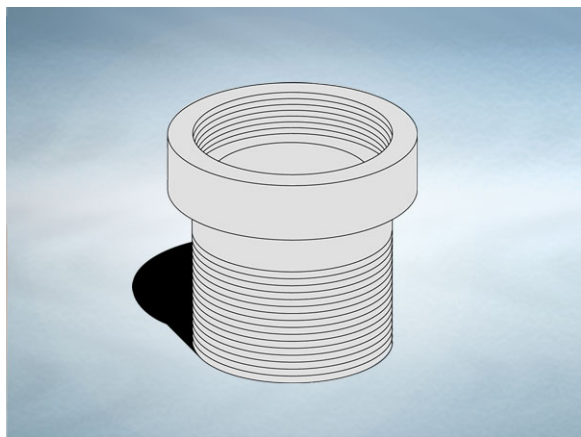


Product Details

UP104 Extension

Technical Data

**Dimensions:**

120 dia. overall size

152 - Overall Height

36 to 145 - min/max height increase

Connection - 4" NPSM Vari-Level thread

Materials - ABS / polycarbonate alloy

Weight - 0.4 kg

General Description:

ABS Vari-Level Extension, with 4" NPSM dia. vertical outlet. Used to increase the height between the top of a body and finished floor level. Extensions may be stacked to obtain extra height, but access to trap/plug will be restricted when used with G/GC/GD/GP series trapped bodies

Materials:

ABS: Used for bodies, dip tubes, extensions and spigot adaptors. A cost effective, fire resistant material.

Polycarbonate: Used for domes. A polycarbonate/ABS blend which offers durability, high impact strength and long-term resistance to ultraviolet light.

All dimensions are in millimetres unless stated. In line with general practice all dimensions shown are nominal.

Wade International

Third Avenue, Halstead, Essex, CO9 2SX.

Telephone: +44 (0)1787 475151

Fax: +44 (0)1787 475579

e-mail: wadetech@alumascwms.co.uk

website: <https://www.alumascwms.co.uk/brands/wade/>

Typical Installation for UP104:

Note: This illustration may show a similar Wade Product - it is intended to show the general installation type only.

